

CLAIR LIGHTING

6X18W Wireless Battery Par



User's Manual



Download App or find LEDHOME on your App store

Product features:

DMX512 console control , via signal cable or wireless DMX 2.4G

Wifi phone operation control support Android 2.3 or above,Apple IOS 4.3 or above(this feature applies to WIFI mother board)

Phone App Name: LEDHOME language: software automatically recognizes the Chinese or English according to the system

Static color choices (4 colors ,dimming 0-255)+strobe function (speed adjustable 0-20)

Macro color :32 colors available

Color automatically jump function (speed adjustable 1-20)

Color mutations function(speed adjustable 1-20)

Strobe with red , green blue ,white ,(speed adjustable 1-20)

3 kinds of sound modes (jump,jump+gradient,strobe)+sound sensitivity(0-100) can be adjusted via control panel or remote control

2.4G wireless electronic switch can be turned on or off via the menu, whether there is know whether turned on or off the wireless module through the upper left corner icon

Wifi module electronic switches will be turned off automatically when exit of WIFI mode to save electricity .

White balance settings ,brightness 6 colors to make the appropriate adjustment(also fin-tune the current role),a value of (127-255)

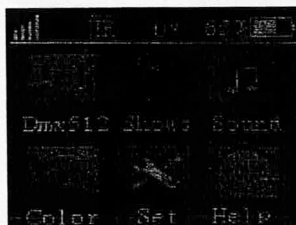
The top right side battery icon by setting on or off icons appear, such as product without battery ,can be set off.

Screensavers setting: can be set as normally open or 5 seconds,10 seconds,15 seconds after turning off the display backlight

Button automatically lock :you can turn on or off through the menu settings

Infrared remote control feature set: can be turned on or off through the menu settings

2.LCD display window:

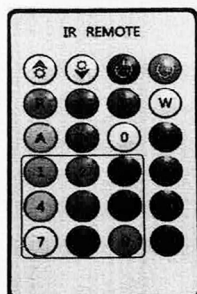


Dmx 512	Shows	Sound	Color	Set	Help
A001= DMX Slave model	1、Auto Color (1-99)	1、Sound Mode1 (1-100)	1、Manual adjust Color R:0-255 G:0-255 B:0-255 W:0-255 Y:0-255 U:0-255	1、Dmx channel 6CH/10CH	Name: 6 Color
	2、Auto Fade (1-99)	2、Sound Mode2 (1-100)	2、Static Color 32 colors for optional	2、2.4g wireless ON/OFF	Version: V4.3
	3、Auto Sudden (1-99)	3、Sound Mode3 (1-100)		3、Infrarrrd ON/OFF	Dmx Channel:
	4、Auto Strobe (1-99)	4、Sound Mode4 (1-100)		4、Display backlight 0-100%	Run Time:
	5、Wifi Mode			5、Lcd Cose time 1、Open 2、5S 3、10S 4、15S 5、30S	User Time:
				6、Restore factory Password:8888	
				7、MANUAL 6666	
				8、Temperature ON/OFF	
				9、Battery ON/OFF	
				10 Background Color LCD	

3.DMX Channels

Channels	6CH mode	10CH mode
CH1	1-255 red dimmer	1-255 Master dimmer
CH2	1-255 green dimmer	1-255 red dimmer
CH3	1-255 blue dimmer	1-255 green dimmer
CH4	1-255 white dimmer	1-255 blue dimmer
CH5	1-255 Amber dimmer	1-255 white dimmer
CH6		1-255 strobe
CH7		0-8 off 9-50 color mixing model (32colors) 51-100 color jump 101-150 color pulse 151-200 color fade 201-220 sound mode 1 221-240 sound mode 2 241-255 sound mode 3
CH8		1-255 speed and choose color (9CH&10CH working together)

4. Remote controller



- 1、 Dimmer up
- 2、 Dimmer down
- 3、 OFF
- 4、 ON
- 5、 R、 G、 B、 W、 Y、 UV single color

- 6、 9 different color mixing (AC 1.....AC 9)
- 7、 0 multi color mixing mode, use up and down to adjust 32 different colors
- 8、 AUTO is color changing,up and down adjust the speed
- 9、 STROBE choose strobe model,there are 32 kinds of strobe optional,up and down adjust the speed
- 10、 FADE color fade model ,up and down adjust speed
- 11、 SOUND mode ,up and down adjust

Note: A. in the WiFi mode mode of the menu's shapes icon, the word "no WiFi" is displayed below the WiFi icon. This version has no app control function of the mobile phone, and the word "led-xxx" is displayed below the WiFi icon. This version has app control function of the mobile phone, and XXX represents three numbers, which is also the address of this light.

B. After the help icon of the menu is confirmed, the information query bar will appear. You can select the binary code to be installed by pressing up and down keys. You can scan the installation.

C. The operation steps of mobile wifi control are as follows:

Step 1: install the app (LED lamp) of the software on the mobile phone

Step 2: switch the lamp display function to WiFi mode (item 5 in show icon mode)

Step 3: turn on the setting icon on the mobile phone, turn on WiFi and search for WiFi address, and the words beginning with LED will appear. For example, "led-xxx", click the link

Step 4: open the app installed on the mobile phone, and the link will be displayed successfully

D. In A001 console mode, press the menu key to adjust the refresh frequency of image number (1200khz / 4000khz / 12khz / 20kHz)

E. In A001 console mode, press the Enter key to adjust the brightness mixing value (0-20)

F. In the process of charging the battery, the charging interface will appear on the display screen (if you need to use lamps while charging, press the menu key under the charging interface to enter the main operation interface)

F. Add remote control operation prompt sound, temperature protection function, and wired RDM function.

(when the temperature reaches 75 ℃, the program will automatically reduce the power to 30%, and when the temperature reaches 95 ℃, the program will automatically turn off the light.)